

Chapter 9

Process Automation

All i-effect processes can be automated by using the *SERVER module. There are two methods of automation:

1) Event controlled automation

The process type *MONITOR defines a server job where one or more output queues are monitored for new spooled files.

2) Time controlled automation

The process type *SCHEDULE defines a server job, which executes tasks time-controlled.

Integrated interfaces can embed their own processing routines into pre- or post processing of complex program sequences.

A license for the module *BASE, module licenses for the required processes, and a license for the *SERVER module are prerequisites for the use of these parameters.

Note: The *SERVER module consists of three parts:

- o Part 1 contains definitions of the particular processing types.
- o Part 2 contains definitions of the data sources.
- o Part 3 contains definitions of the processing steps.

These allow a high level of flexibility when defining server entries. Data may be chosen and processed within a *SERVER job.

Characteristics of the *MONITOR/*SPOOL Process

i-effect uses the QIBM_NOTIFY_CRTSPLF environmental variable to write attributes of spooled files, which are newly created, into the EFFSRVLST data queue. This environmental variable is set as follows when *SERVER is running, and is erased when *SERVER is shut down.

```
QIBM_NOTIFY_CRTSPLF      '*DTAQ IEFFECT/EFFSRVLST'
```

i-effect reads the spooled file characteristics from the EFFSRVLST data queue when *MONITOR has been specified. The entries are then compared with the data definitions table and if they match, then *SERVER calls up the corresponding server task.

To use *MONITOR, it must be determined that output queues are not assigned to a printer, or the spooled files, which are to be processed by *SERVER, are not created with the status *HLD (HELD).

*MONITOR/*IFS und *MONITOR/*DB2 Job Characteristics

To monitor IFS directories and DB2 libraries, i-effect works with processes which check the specified directories and/or libraries at definable intervals for data which is still to be processed. If a file in one of the specified directories or libraries matches the specified criteria, then the server will process it.

Note: The file will not be erased from the directory or library. *MOVE or *DELETE can be used to further define the server process to either move or delete the files. If the file is left in the directory or library, then it will continue to be processed.

Note: After *IFS/DB2 *MONITOR server entries have been set up, i-effect must be restarted for the changes in the data selection table (option 12) to take effect.

%SRVDIR% and Other Possible Variables

*SERVER's working directory %SRVDIR% is provided at the start of a server job to allow post-processing of data, which has been created in the processing steps before. Files that are stored here can be used as source files for further server processing steps, e.g. for distribution. The directory is specified in the default settings of the *SERVER module under menu item 80 of the i-effect start menu.

Further Variables:

%IFSPATH%	Only the chosen path will be used for processing. [Only with JOBTYP (MONITOR)]
%IFSFILE%	Only the chosen IFS file name will be used for processing. [Only with JOBTYP (MONITOR)]
%DB2FILE%	Only the chosen DB2 file name will be used for processing. [Only with JOBTYP (MONITOR)]
%DB2LIB%	Only the chosen library name will be used for processing. [Only with JOBTYP (MONITOR)]
%DB2MBR%	Only the chosen member file will be used for processing. [Only with JOBTYP (MONITOR)]
%TMP%	"/TMP" will be used as the output path.
%HOME%	The "home path" ("/HOME/USERNAME") of the user. If the user does not have a home path, an error message will appear that recommends the creation of a home path for the current user.
%CURDIR%	Current Directory
%SPLUSER%	Name of the user of the spooled file.
%USRDTA%	USRDTA attribute of the spooled file.
%SPLOUTQ%	Name of the output queue
%SPLFILE%	The spooled file name, chosen for processing, will be used (only with JOBTYP(*SPOOL/*MONITOR)).
%SPLJOB%	The name of the job that created the spooled file will be used (only with JOBTYP(*SPOOL/*MONITOR)).
%JOBNN%	The number of the job that created the spooled file will be used. (only with JOBTYP(*SPOOL/*MONITOR)).
%SPLFILNR%	The file number of the spooled file will be used. (only with JOBTYP(*SPOOL/*MONITOR)).
%USRDFNDA%	USRDFNDA attribute of the spooled file
%USER%	Name of the current user.
%DATE%	Date DD.MM.YYYY
%YEAR%	Current year YYYY.
%YEAR2%	Current year YY
%MONTH%	Current month MM.
%MONTHNAME%	Name of the current month.
%DAY%	Current day.
%WEEKDAY%	Current weekday, e.g. "Friday."
%TIME%	Current time HH:MM:SS

<code>%TIMESTAMP%</code>	Current time stamp, YYYY-MM-DD-HH.MM.SS.MSMSMS
<code>%DEFAULTPATH%</code>	This variable will be filled with the default value from the default settings of the *SERVER module.
<code>%LASTSERVER TIMESTAMP%</code>	The time stamp of the last access to this server job in the format: YYYY-MM-DD-HH.MM.SS.MSMSMS With this variable, it is possible to call up, e.g. with SQL parameters of a CVTDBF server task, all data records from the DB2 table/database that have been changed since the last use of this server job. It is required that the timestamp of the creation of the specific data record is saved in the table. The SQL syntax would look, e.g. like this: select RECORD from TABLE where timestamp. %LASTSERVERTIMESTAMP%
<code>%SESSION- NUMBER%</code>	The i-effect logbook session number used by the server task for run time.

Configuration of i-effect *SERVER

This section describes how to add entries to the server pool in order to define the processes which are to be automated.

Menu Item 40: Work with *SERVER (WRKEFFSRV)

Choose menu item 40 of the main menu i-effect "Conversion, Compression, Communication" or enter the command WRKEFFSRV.

The following display will appear:

```

Sitzung A: [24 x 80]
Datei Bearbeiten Anzeige Kommunikation Aktionen Fingertaste Hilfe
Work with i-effect server entries                                SBCS24
Current status . . . . . Server NOT active.                    05/18/10 09:28:34
Position to . . . . . _____                               Sequence

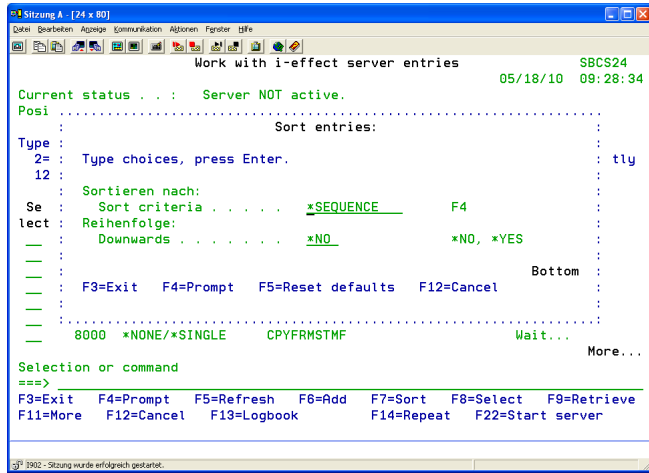
Type choices, press Enter.
2=Change 3=Hold 4=Delete 5=Display 6=Release 9=Start immediatly
12=Select Data 14=Define Processing 16=WorkFlow 33=Copy

Se
lect Seq. Datatype/Job Description Status
---  ---  ---  ---  ---
4000 *NONE/*SINGLE Abruf eMails Wait...
4811 *NONE/*SINGLE FTPget von iSeries Wait...
5000 *NONE/*SCHEDULE UTILMD ausgehend Wait...
6800 *NONE/*SINGLE FTP Partner www.oscho.de Wait...
6820 *NONE/*SINGLE FTO Dartner FTP_Data_from_GLS Wait...
7111 *IFS/*SCHEDULE SIGG Test Wait...
8000 *NONE/*SINGLE CPYFRMSTMF Wait...
More...

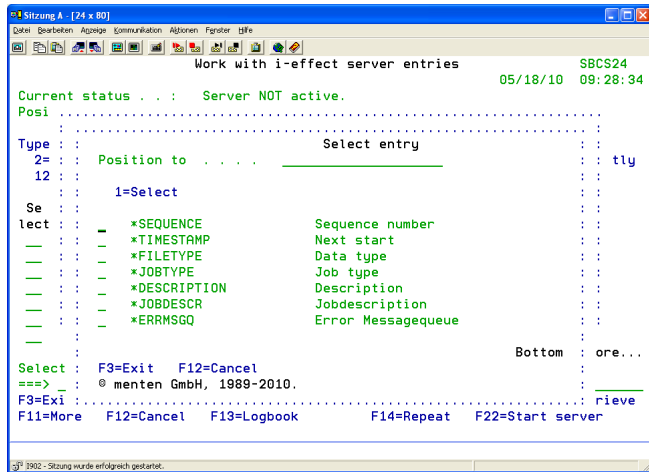
Selection or command
====>
F3=Exit F4=Prompt F5=Refresh F6=Add F7=Sort F8=Select F9=Retrieve
F11=More F12=Cancel F13=Logbook F14=Repeat F22=Start server
  
```

Sort entries

In order to quickly find entries, the entries can be sorted. Therefore, press function key F7. The following display will appear:



The following details can be chosen for sorting:



Details for sorting

- *SEQUENCE Sort by sequence number
- *TIMESTAMP Sort by next timestamp
- *FILETYPE Sort by file type
- *JOBTYPE Sort by job type
- *DESCRIPTION Sort by description
- *JOBDESCR Sort by job description
- *ERRMSGQ Sort by error message queue

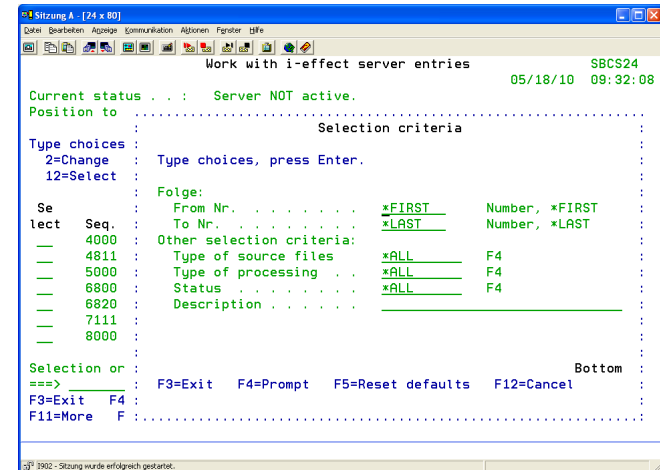
Furthermore, determine whether the entries are to be sorted in ascending or de-scending order:

Order

- *NO Sort entries in ascending order (A -> Z)
- *YES Sort entries in descending order (Z -> A)

Filter list entries

In order to quickly find entries, the entries can be filtered. Therefore, press function key F8. The following display will appear:



The following options are available for sequence numbers:

- *FIRST First sequence number
- *LAST Last sequence number
- Number A number in the range of existing sequence numbers

Type of source file

- *ALL All types of source files will be used.
- *SPOOL Only spooled source files will be used for processing.
- *DB2 Only data base files will be used for processing.
- *IFS Only IFS files will be used for processing.
- *NONE No files will be used for processing.

Job type

- *ALL All job types
- *MONITOR Job type Monitor will be used (Spool/IFS/DB2)
- *SCHEDULE Job type Schedule will be used
- *SINGLE Job type Single will be used

Status

- *ALL All types of status
- *PENDING Only status "Pending" will be used
- *HOLD Only status "Hold" will be used
- *STARTED Only status "Started" will be used

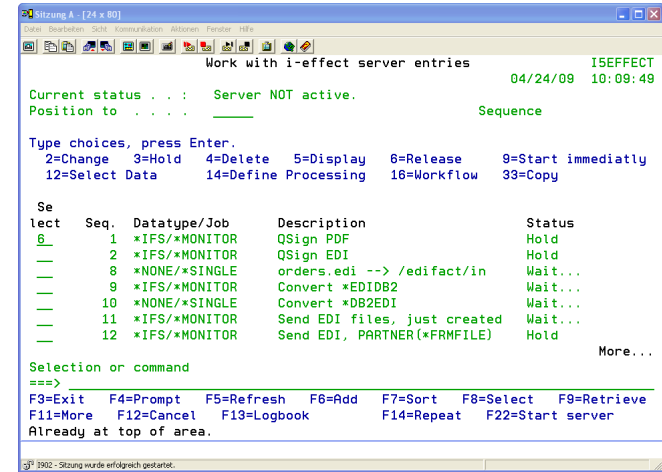
Description

A free text for searching can be entered here.

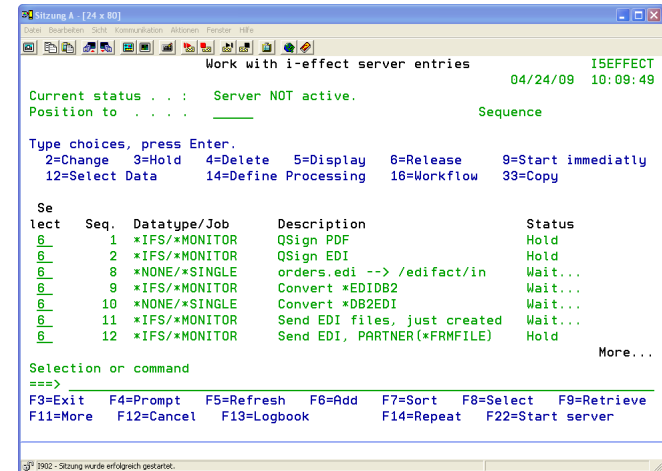
Repeat option

Function key F14 can be used to repeat an option that is entered into the Selection column. Enter the option number into the choice box of the first entry for which the option shall be repeated. This option will then be repeated for this entry and every following entry until the end of the list. The entries listed before the first entry with the option will not be concerned.

Before pressing function key F14:



After pressing function key F14.



Edit entries

- 1) Enter the complete definition of all the i-effect *SERVER processes into the program interface "Work with i-effect Server Entries." The current server processes can be monitored by indication of the "Status" of the list entries. Entries can be added, processed or deleted.
- 2) Use function key F6 (add new server entry) or enter the command ADDERRSRV to add a new entry to the list.
- 3) Enter the unique sequence number.
- 4) Define the type of data source and select the processing type (*MONITOR, *SCHEDULE or *SINGLE).

After *MONITOR is specified this display will appear:

```

Sitzung A - [24 x 80]
Datei Bearbeiten Sicht Kommunikation Aktionen Fenster Hilfe
Add server entry (ADDEFFSRVE)

Type choices, press Enter.

Sequence number . . . . . > 10 . . . . . 1-9999
Type of source files . . . . . > *IFS . . . . . *SPOOL, *DB2, *IFS, *NONE
Type of processing . . . . . > *MONITOR . . . . . *MONITOR, *SCHEDULE, *SINGLE
Description . . . . . > Process incoming EDI files

Bottom
F3=Exit F4=Prompt F5=Refresh F10=Additional parameters F12=Cancel
F13=How to use this display F24=More keys

3902 - Sitzung wurde erfolgreich gestartet.

```

*MONITOR is an i-effect server job that triggers server processes through monitoring output queues, IFS directories, or DB2 libraries for incoming data.

The following display will appear if *SCHEDULE is specified:

```

Sitzung A - [24 x 80]
Datei Bearbeiten Sicht Kommunikation Aktionen Fenster Hilfe
Add server entry (ADDEFFSRVE)

Type choices, press Enter.

Sequence number . . . . . > 10 . . . . . 1-9999
Type of source files . . . . . > *IFS . . . . . *SPOOL, *DB2, *IFS, *NONE
Type of processing . . . . . > *SCHEDULE . . . . . *MONITOR, *SCHEDULE, *SINGLE
Valid from . . . . . > 000000 . . . . . Time
Valid until . . . . . > 235959 . . . . . Time
Valid day of week . . . . . > *ALL . . . . . *ALL, *MON, *TUE, *WED...
+ for more values
Valid day of month . . . . . > *ALL . . . . . *ALL, *FIRST, *LAST, 01...
+ for more values
Delay in minutes . . . . . > 60 . . . . . 1-9999
Description . . . . . > 'Process incoming EDI files'

Bottom
F3=Exit F4=Prompt F5=Refresh F10=Additional parameters F12=Cancel
F13=How to use this display F24=More keys

3902 - Sitzung wurde erfolgreich gestartet.

```

*SCHEDULE is an i-effect server job which schedules the desired tasks.

The following display will appear if *SINGLE is specified:

```

Sitzung A - [24 x 80]
Datei Bearbeiten Sicht Kommunikation Aktionen Fenster Hilfe
Add server entry (ADDEFFSRVE)

Type choices, press Enter.

Sequence number . . . . . > 10 . . . . . 1-9999
Type of source files . . . . . > *IFS . . . . . *SPOOL, *DB2, *IFS, *NONE
Type of processing . . . . . > *SINGLE . . . . . *MONITOR, *SCHEDULE, *SINGLE
Description . . . . . > 'Process incoming EDI files'

Bottom
F3=Exit F4=Prompt F5=Refresh F10=Additional parameters F12=Cancel
F13=How to use this display F24=More keys

3902 - Sitzung wurde erfolgreich gestartet.

```

*SINGLE is a processing type that defines an i-effect server job that can be called up manually. With this type of processing, it is possible to define source data generically and predefine processes that occur irregularly. To call up a *SINGLE process, start the corresponding server process in the main table. *SINGLE processes can also be called up at the command interface. Predefined i-effect processes can be called up from the users own programs. Use the command STRSRVTSK POS (n), where "n" is the sequence number of the corresponding server entry in the main table.

- 5) Confirm by pressing enter. Choose the new entry and call up the program interface (WRKSRVSLT) with option 12 in order to select the data sources.

How to edit existing entries is described in the following section.

Options

In the program interface „Work with i-effect Server Entries “(WRKEFFSRV) the following options are available. Choose the corresponding selection number in the display in order to edit existing entries as required:

Option 2 **Change Server Entry (CHGEFFSRVE)**

Option 2 changes the relevant data form the current display. Options and parameter meanings are discussed in the section "i-effect *SERVER Parameters."

Option 3 **Hold Server Entry**

Use this option to disable server entries temporarily. Independent of the scheduled holding time, *SERVER will not process this entry. In the status column these entries are marked with HOLD. Use option 6, to reactivate these entries.

Option 4 **Delete Server Entry**

Use this option to delete server entries, which will then be no longer processed automatically. By confirming the display, the entry will be deleted from the server pool.

Option 5 **Display Server Entry (DSPEFFSRVE)**

Use option 5 to display detailed information about the server entry. Options and parameter meanings are discussed in the section "i-effect *SERVER parameters."

Option 6 **Release Held Server Entries**

Use this option to release server entries which are on HOLD. An active entry is displayed in the status column with the same status as before it was disabled (usually WAITING).

Option 9 **Start Immediately**

Use this option to immediately start the selected server entry, provided, that the server entry has previously been completely defined corresponding to source files and processing steps.

Option 12 **Select Data**

Use this option to select source data for automated processing.

For additional information see section below "Select Data for Processing (WRKSRVSLT)":"

If in *SERVER's main table the file type *NONE has been defined, this option is invalid!

Option 14 **Define Processing**

Use this option to call up the program interface that defines the processing steps. For additional information, see section below "Define i-effect *SERVER Processing (WRKSRVPRC)":"

Option 16 **Workflow**

Use this option to define further process steps, that are dependant on the end status of the server entry.

Possible Special Values:

*OK	The processing steps will be called up if the server entry was processes successfully.
*ERROR	The processing steps will be called up if the server entry was not processed successfully.
*DIAG	The processing steps will be called up if the server entry was processed successfully, but errors occurred during processing.

Option 33 **Copy Server Entry**

Use this option to copy an existing server entry to a new one with a new sequence number. All other existing attributes of the server entry will be copied into the new entry.

Parameters of the ADDEFFSRVE Command (Main Table of the i-effect *SERVER Module)

This section describes the parameters in the order in which they are displayed. The parameters displayed may depend on selections that have already been made.

Sequence Number (POS)

To identify the entries in the *SERVER list, enter the sequence number, that labels each entry.

Source File Type (FILETYPE)

Choose the type of files for automatic processing.

Possible Special Values:

<i>*SPOOL</i>	Automates the processing of spooled files.
<i>*DB2</i>	Automates the processing of database files.
<i>*IFS</i>	Automates the processing of IFS files.
<i>*NONE</i>	*SERVER will not put source files in the selection table. Choose this option to automate user defined tasks.

Monitor or Schedule (JOBTYPE)

i-effect's *SERVER module has two methods of automation: Either *MONITOR or *SCHEDULE define the manner in which the processes are controlled.

Possible Special Values:

<i>*MONITOR</i>	Defines a *SERVER job in which one or more output queues are monitored for new spooled files, that match predefined criteria.
<i>*SCHEDULE</i>	Defines a *SERVER job which schedules the defined tasks.

Valid From, Valid Until (TIMVALFRM/TIMVALTO)

Specifies the time of day when the conversion should be started. The *SERVER entry will only be chosen if the current system time is within the specified time span.

If for example 180000 is entered as begin and 235959 as the end, the i-effect *SERVER will only run the job if the system time is between 18:00 and 23:59.

This parameter is only for JOBTYPE (*SCHEDULE).

Valid Day of the Week (WEEKVAL)

The execution time of *SERVER can be further limited to a particular day of the week.

This parameter is only valid for JOBTYPE (*SCHEDULE).

The following options are possible:

<i>*ALL</i>	Processing will occur on any day.
<i>*MON</i>	Only Mondays
<i>*TUE</i>	Only Tuesdays
<i>*WED</i>	Only Wednesdays
<i>*THU</i>	Only Thursdays
<i>*FRI</i>	Only Fridays
<i>*SAT</i>	Only Saturdays
<i>*SUN</i>	Only Sundays

Valid Day of the Month (DAYVAL)

The execution time of *SERVER can be further limited to a particular calendar day.

This parameter is only valid for JOBTYPE (*SCHEDULE).

The following options are possible:

<i>*ALL</i>	The process will be run on all calendar days.
<i>*FIRST</i>	Only at the beginning of the month.
<i>*LAST</i>	Only at the end of the month.
<i>*01-31</i>	Only on the designated calendar day.

Delay in Minutes (TIMER)

Specifies the duration in minutes that *SERVER has to wait before the process is started. If *YES is specified in parameter "Start Immediately", the process starts immediately, but will be repeated after the specified time has expired.

This parameter is only valid for JOBTYPE (*SCHEDULE).

Start Immediately (START)

Determines whether the processing should be started immediately after a new sequence has been entered or after the time specified in the parameter TIMER has expired.

This parameter is only valid for JOBTYPE (*SCHEDULE).

Description (TEXT)

Describes the process which will be run with the server entry.

Message Queue (ERRMSGQ)

Name of the message queue to which abort messages from server processing will be sent.

Possible Special Value:

*SYSOPR Abort messages will be sent to the system operator.

Job Description for Server Entry (JOBID)

Enter a name for the job description, which will be used for the execution of server tasks.

Possible Special Values:

*STD The default job description SERVERTASK will be used.

Select Data for Processing (WRKSRVSLT)

- 7) Use option 12 to select data for processing:

```

Sitzung A: [24 x 80]
Datei Bearbeiten SCH Kommunikation Aktionen Fenster Hilfe
i-effect Server - select data for processing I5EFFECT
03/07/08 10:10:28
Server entry . . . . : 11
Job-/Datatype . . . : *MONITOR/*IFS
Description . . . . : Send EDI files, just created
Position to . . . . : _____ Sequence

Type options, press Enter.
 2=Change 3=Copy 4=Delete 5=Display

Se lect Seq. Description
_      10 Select *.EDI

Bottom
Selection or command
====>
F3=Exit F4=Prompt F5=Refresh F6=Add F9=Retrieve F11=More
F12=Cancel
© menten GmbH, 2004.
  
```

The parameters in the upper, static part of the display are taken from the main table and have the following meaning:

Server Entry

The sequence number will be displayed. It assigns a unique number to the server entry in the main table. All entries in the table are associated to the server entry. Processes assigned to this server entry will be run with all of the chosen data.

Job/File Type

Displays the definition entered for the type of source file and the type of processing in the main dialogue.

Description

Displays the brief description of the server entry in the main table.

Start List at

The start of the display list may be repositioned here. Enter the sequence number of the desired entry.

The tabular structured list entries contain the following:

Sequence

The sequence number of the server entry is displayed in the data selection table. It assigns a unique number to the server entry in the main table. All entries in this display will be assigned to the corresponding entry in the main table.

Description

The brief description of the entry in the data selection table.

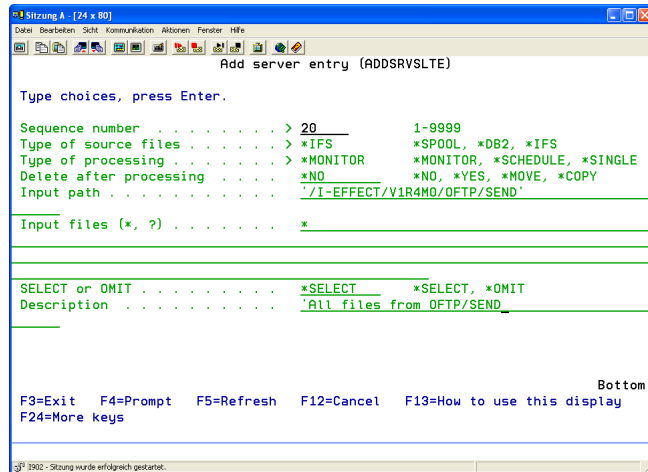
Attributes

The most important and last changed parameters of this entry are displayed here. Press F11 to display these attributes.

- 8) Use function key F6 to add entries to the data selection table (ADDSRVLTE).

Add Server Entry to Data Selection Table (ADDSRVSLTE)

Enter the command ADDSRVSLTE or use function key F6 to add a new entry.



i-effect *SERVER Parameters (Data Selection Table)

The following gives an overview of the parameters for the commands ADDSRVSLTE and CHGSRVSLTE.

The overview contains a complete list of the fields, whose contents are saved in the data selection table and are used by i-effect's *SERVER module.

Sequence Number (POS)

The sequence number of the server entry in the main table.

Sequence Number (FOLGE)

Assigns a unique number to the entry in the file selection table.

Type of Source File (FILETYPE)

See "i-effect *SERVER Parameters" (main table of server processing) of this chapter.

Job Type (JOBTYPE)

See section "Option 14 Define Processing" of this chapter.

Delete After Processing (DELETE)

After successful processing the source files can be deleted, moved, or copied, if desired.

*NO	Source files will not be deleted.
*YES	The source files will be deleted after successful processing.
*MOVE	The source files will be moved after successful processing.
*COPY	The source files will be copied after successful processing.

For the description of the following parameters (up to output queue), see Chapter 4 "Conversion", section "CVTSPL Command."

- File (FILE)
- Job Name (JOBNAM)
- Spooled File Number (SPLNBR)
- User (USER)
- Form Type (FORM)
- User Data (USRDTA)
- Status (STATUS)
- Devices (DEVICE)
- Output Queue (OUTQ)

Output Queue for COPY/MOVE (TARGETOUTQ)

The name of the output queue to which the spooled files should be copied or moved.

Input File(s) (NEWFILES)

Qualified name of the file(s) to be processed. If desired, the special value *ALL can be specified in order to process all files or members of a library. Wildcards are allowed as well. For example, if "SALES*" is defined, all files whose name begins with "SALES.." are processed.

<i>*ALL</i>	All physical files of the specified library are processed.
<i>generic*</i>	A name followed by a "*" tells the system to process all files, whose name begins with the specified string.

Member File Text (MBRTEXT)

The text which describes the member file. The special value *ALL may be used to determine that all files are to be processed. Generic names are also supported. For example, if "SALES*" is defined, all file members whose name begins with "SALES..." are processed.

<i>*ALL</i>	All member files will be processed.
<i>generic*</i>	A name followed by a "*" tells the system to process all member files whose name begins with the specified string.

Target File(s) for COPY/MOVE (TARGETFILE)

Specify the fully qualified name of the target file(s) if the options MOVE or COPY have been chosen in the DELETE parameter. This option is only valid for DB2 files.

Input Path (FRMPATH)

Name of the IFS path from which the input data is to be read. This option is only valid for IFS file(s).

IFS Input File(s) (*, ?) (FRMIFSFILE)

Name of the file(s) to be processed. By selecting the wildcards "*" or "?" all files with a special name pattern will be selected. The wildcard "*" substitutes any string in a filename; the wildcard "?" substitutes exactly ONE character. This option is only valid for IFS files.

Target Path for COPY/MOVE (TARGETPATH)

Specify the name of the destination path if *MOVE or *COPY have been specified in the DELETE parameter. This option is only valid for IFS files.

Target File Name for Copy (TARIFSFILE)

If the options *MOVE or *COPY were selected in the DELETE parameter, the name of the target files is to be specified here. This option is only valid for IFS files.

SELECT or OMIT (CHOICE)

The parameter CHOICE determines whether data which is in the server data selection entry should be processed or if it should be omitted.

<i>*SELECT</i>	The chosen data will be processed.
<i>*OMIT</i>	The chosen data will not be processed.

Description (TEXT)

A brief description of the server entry.

Processing of Existing Server Entries

Choose the following options in the display "Select Data for Processing" to edit existing entries:

- Option 2 Change Server Entry (CHGSRVSLTE)**
Choose option 2 to change a server entry. The meaning and possible options can be found in the section "i-effect *SERVER Parameters."
 - Option 3 Copy Sever Entry**
Choose option 3 to copy a server entry from an existing sequence number into a new one. All existing data will be copied.
 - Option 4 Delete Server Entry**
Choose option 4 to delete server entries which will no longer be processed automatically. By confirming the display, this entry is deleted from the server pool.
 - Option 5 Display Server Entry (DPSRVSLTE)**
Choose option 5 to display detailed information about a server entry. The meaning and possible options of the parameters can be found in the section "i-effect *SERVER Parameters."
- 9)** After server entries from the data selection table have been processed, press F3 or F12 to return to the main table.
 - 10)** Use option 14 to finalize server entry definitions.

Define Processing (WRKSRVPRC)

The processing steps for the previously selected files can be defined using the program interface.

The processing steps defined here are applied in the order of their sequence numbers to all the data previously selected.

Note: *SERVER's working directory %SRVDIR% is provided at the start of a server job to allow post-processing of data, which has been created in the processing steps. Files that are stored here can be used as source files for further server processing steps, e.g. for distribution. The directory is specified in the default settings of the *SERVER module under menu item 80 of the i-effect start menu.

```

i-effect Server - define processing          I5EFFEECT
03/07/08  10:31:45

Server entry . . . . : 11
Job-/Datatype . . . : *MONITOR/*IFS
Description . . . . : Send EDI files, just created
Position to . . . . : _____ Sequence

Type options, press Enter.
  2=Change  3=Held  4=Delete  6=Release  7=Change sequence
  9=Display command  33=Copy

Se      Processing
lect Seq.  type      Description      Sts
---  ---  ---      ---              ---
  10 *COMMUNICATE/*FTP/*SEND  Send selected file via FTP  *HLD
  20 *COMMUNICATE/*OFTP/*SEND  Send selected file via OFTP  *HLD
  30 *COMMUNICATE/*AS2/*SEND  Send selected file via AS2  *RLS
  40 *COMMUNICATE/*HTTP/*SEND  Send selected file via HTTP  *HLD

Bottom

Selection or command
====>
F3=Exit  F4=Prompt  F5=Refresh  F6=Add  F9=Retrieve  F11=More
F12=Cancel
© menten GmbH, 2004.
  
```

The parameters in the upper part of the display are taken from the main table. Their meaning is described above in the parameters for the "WRKSRVSLT" command.

- 11) Use function key F6 to add a server entry to the processing table.

Please note: The entries dealt with here are dependant on their corresponding entries in the main table of i-effect's server and will be assigned to them.

The input fields in the display have the following meaning:

Sequence

The sequence number of the server entry in the process definitions table. A unique number is assigned to the entry in the process definitions table. All entries in this display will be assigned to the corresponding entry in the main table.

Description

Enter a short description for the entry.

Processing Type

Select how the chosen source data should be processed. The type of processing is divided into two levels.

By pressing F4 a list of the possible options will be displayed. Choose one of the following first:

*CONVERT	Converts the source data.
*COMPRESS	Compresses the source data.
*COMMUNICATE	Communicates the data.
*CRYPT	Specifies the use of cryptographic functions.
*USERDEFINED	Allows for user defined commands.

The display that appears after having chosen the processing type depends on the choice of processing type. The specific types will be described in detail in the following sections.

```

i-effect Server - define processing          I5EFFEECT
03/07/08  11:48:42

Server entry . . . . : 11
Job-/Datatype . . . : *MONITOR/*IFS
Descri
-----
Position to . . . . : _____ Select entry

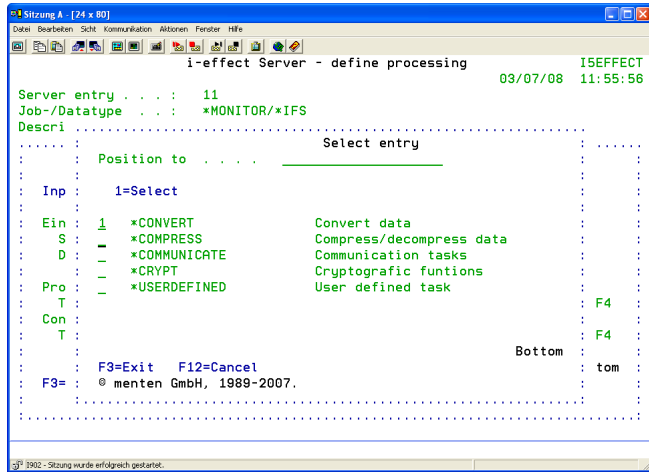
Inp : 1=Select
Ein : - *CONVERT          Convert data
S   : - *COMPRESS        Compress/decompress data
D   : - *COMMUNICATE     Communication tasks
Pro : - *CRYPT            Cryptographic functions
T   : - *USERDEFINED     User defined task

Bottom

F3=Exit  F12=Cancel
F3=      © menten GmbH, 1989-2007.
  
```

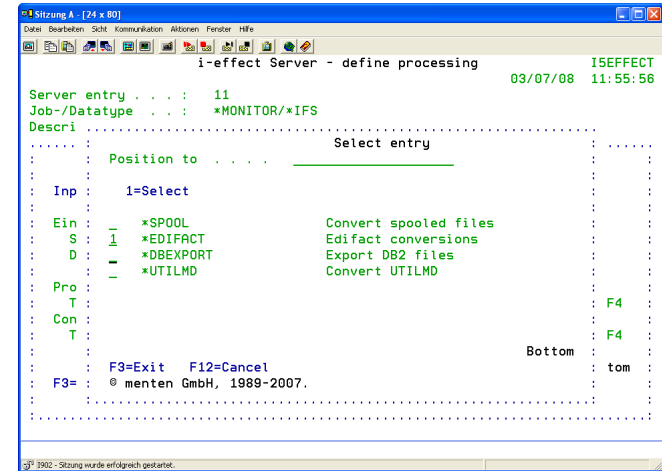
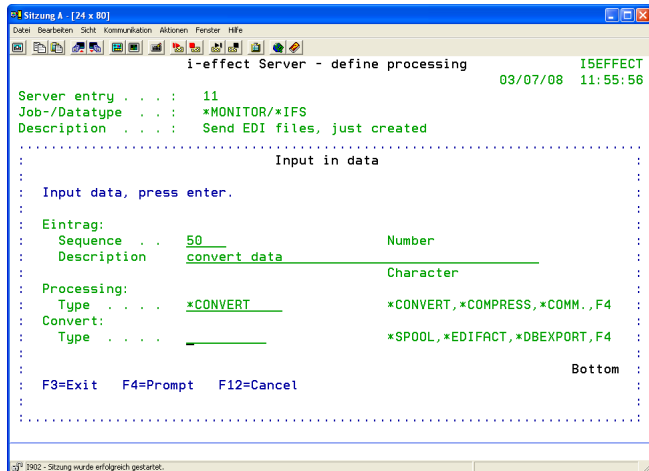
Processing Type *CONVERT

Choose *CONVERT from the display "Add Server Entries to the Processing Table."
 (Use the function key F4 to display a list of the different processing types.)



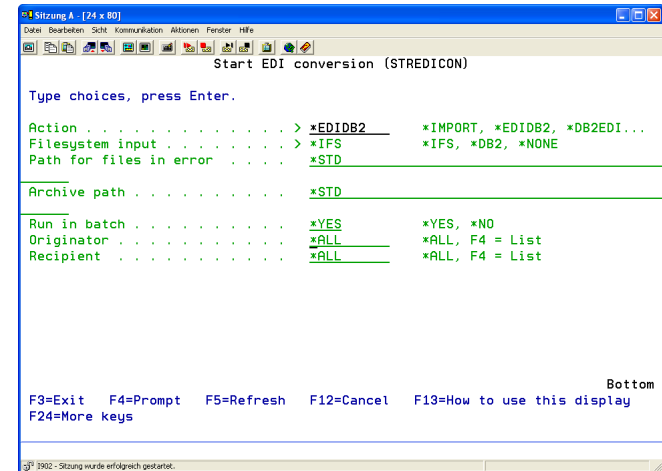
Confirm the choice by pressing enter:

Define the type of conversion. (Use the function key F4 to display a list of the different types of conversion)



Confirm the choice by pressing enter.

The conversion parameters, which will be used to process the desired files, can now be determined.



Note: The parameters of the STREDICON command conform to the server module. For example, the parameters for choosing source files are not available here because these were already defined in the server's data selection table.

For a description of the parameters see Chapter 4 "Conversion" menu item 41

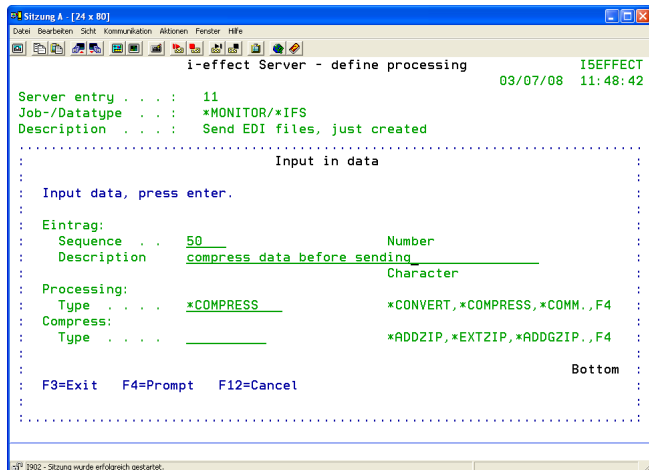
Use of the %SRVDIR% Variable

*SERVER's working directory %SRVDIR% is provided at the start of a server job to allow post-processing of data that has been created in the processing steps before. Files which are stored here can be used as source files for further server processing steps, e.g. for distribution. The directory is specified in the default settings of the *SERVER module under menu item 80 of the i-effect start menu.

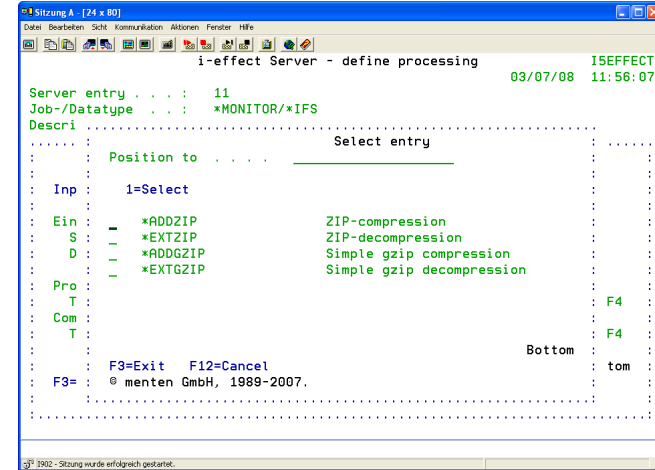
Processing Type *COMPRESS

Choose the processing type *COMPRESS from the display "Add Server Entry to the Processing Table."

The following display will appear:



Press function key F4 to determine the type of compression:



Compression Type

Determine the type of compression/decompression to process the source data.

A list of the different compression types can be displayed by pressing function key F4. Choose one of the following compression types:

- *ADDZIP Choose this option to start ZIP compression.
- *EXTZIP Choose this option to start ZIP decompression.
- *ADDGZIP Choose this option to start simple gzip compression.
- *EXTGZIP Choose this option to start simple gzip decompression.

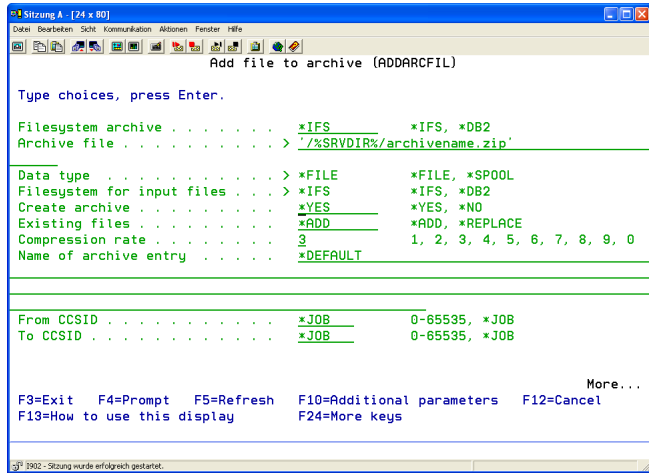
Note: The parameters of the specific commands conform to the server module. For example, the parameters for choosing source files are not available here because these were already defined in the server's data selection table.

For a description of the parameters see Chapter 5 "Compression."

Example: Compression Type *ADDZIP

The compression parameters for the procession of the desired files can be defined here.

For a parameter description see Chapter 5 "Compression," menu item 3 (ADDARCFIL)



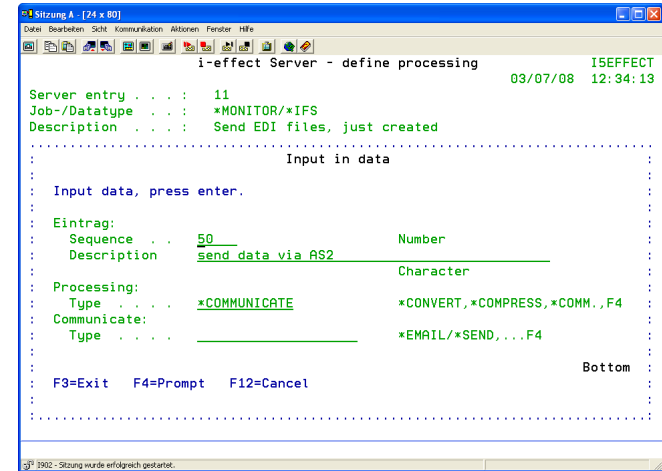
Use of the %SRVDIR% Variable

*SERVER's working directory %SRVDIR% is provided at the start of a server job to allow post-processing of data that has been created in the processing steps before. Files which are stored here can be used as source files for further server processing steps, e.g. for distribution. The directory is specified in the default settings of the *SERVER module under menu item 80 of the i-effect start menu.

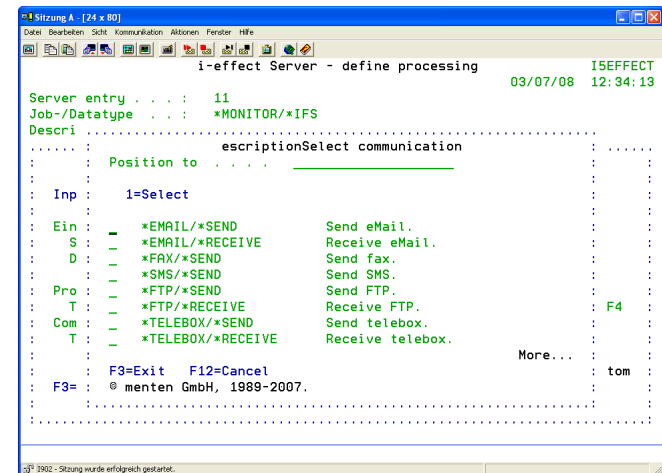
Processing Type *COMMUNICATE

Choose the processing type *COMMUNICATE from the display "Add Server Entry to the Processing Table."

Press the enter and the following display will appear:



Press function key F4 to determine the communication type:

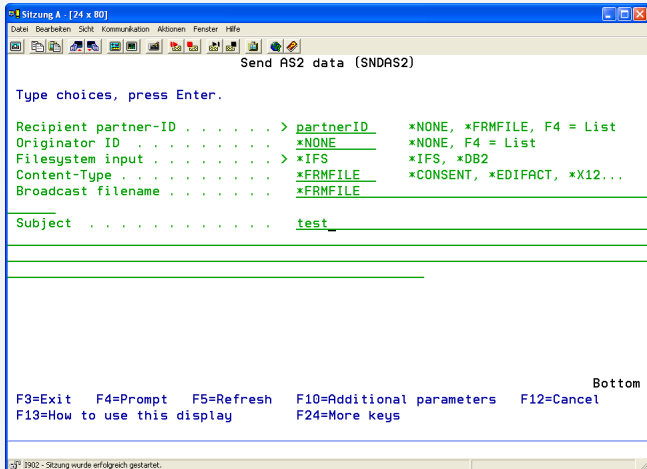


Communication

A list of the different communication types can be displayed by pressing function key F4. Choose one of the following communication types:

- *EMAIL/*SEND* Use this option to send the data via email.
- *EMAIL/*RECEIVE* Use this option to receive the data via email.
- *FAX/*SEND* Use this option to send PDF files via eFax.
- *SMS/*SEND* Use this option to send text via eSMS.
- *FTP/*SEND* Use this option to send data via FTP.
- *FTP/*RECEIVE* Use this option to receive data via FTP.
- *TELEBOX/*SEND* Use this option to send data via Telebox.
- TELEBOX/*RECEIVE* Use this option to receive data via Telebox.
- *OFTP/*SEND* Use this option to send data via OFTP.
- *OFTP/*RECEIVE* Use this option to receive data via OFTP.
- *AS2/*SEND* Use this option to send data via AS2.
- *HTTP/*SEND* Use this option to send data via HTTP or HTTPS (Hypertext Transfer Protocol secure).
- *BASE/*SNDBACK* Use this option to send back files that were received, in case they were not received correctly.
- *BASE/*SNDFILE* Use this option to send the desired files via a predefined partner and communications profile.

Depending on the chosen communication types, the corresponding communication command will be prompted, e.g. SNDEMAIL for the communication type *EMAIL/SND, SNDAS2 for the communication type AS2/SEND and so on.

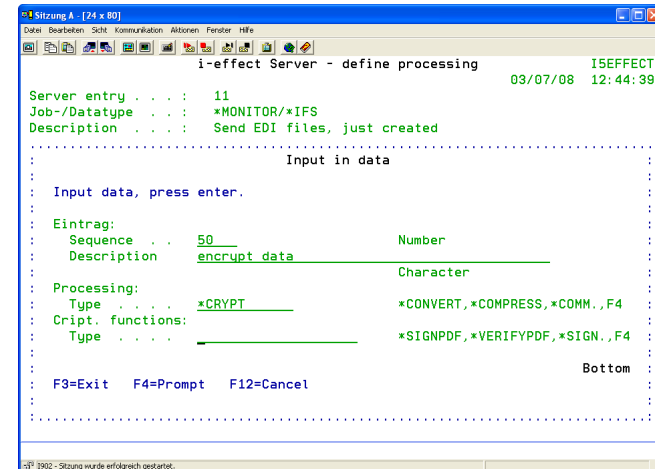


Note: The parameters of the specific commands conform to the server module. For example, the parameters for choosing source files are not available here because these were already defined in the server's data selection table. For a description of the parameters see Chapter 6 "Communication."

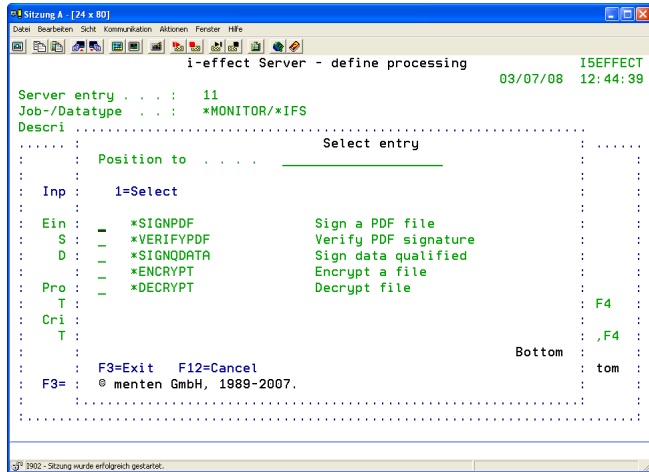
Processing Type *CRYPT

Choose the processing type *CRYPT from the display "Add Server Entry to the Processing Table."

Press enter and the following display will appear:



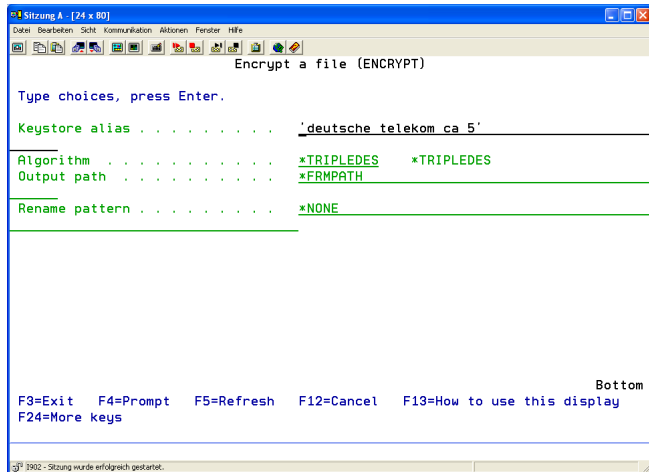
Press function key F4 to determine the cryptographic functions:



The following functions are available:

- *SIGNPDF Choose this option to sign PDF files.
- *VERIFYPDF Choose this option to verify signed PDF files.
- *SIGNQDATA Use this option to give the desired files a qualified signature.
- *ENCRYPT Use this option to encrypt files.
- *DECRYPT Use this option to decrypt files.

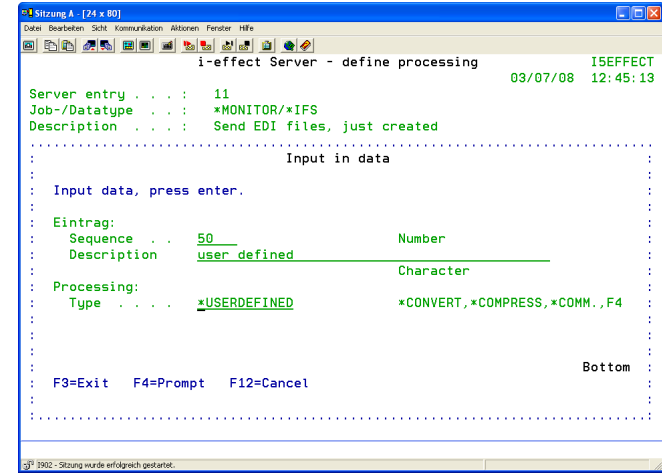
If the *ENCRYPT function has been chosen, the following display will appear:



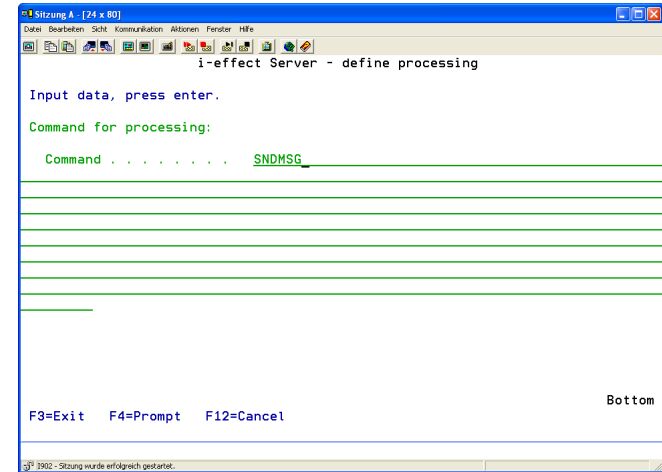
Processing Type *USERDEFINED

Choose the processing type *USERDEFINED from the display "Add Server Entry to the Processing Table."

Press enter and the following display will appear:



With the processing type *USERDEFINED it is possible to use any commands. Use the enter key and then F4 (Prompt) to receive input assistance for the chosen command.



Editing of Existing Server Entries

To edit existing entries, if needed, enter the option number into the choice box at the beginning of the line of the corresponding entry:

Option 2 Change Server Entry

To change a server entry, enter option 2 into the corresponding choice box. In the following display all of the related data can be changed. The meaning and possible options can be found in the section "i-effect *SERVER Parameters."

Option 3 Hold Server Entry

This option can be used to exclude predefined server entries from processing.

Option 4 Delete Server Entry

Use this option to delete server entries, which will then no longer be processed automatically. By confirming the next display, this entry is deleted from the server pool.

Option 6 Release Held Server Entries

Use this option to release server entries, which are on HOLD, for further processing.

Option 7 Change Sequence Number

If changing the sequence of the processing steps is desired, this option can be used to change the sequence number.

Option 9 Display Command

The command which underlies the entry will be displayed with its parameters.

The list of the individual i-effect commands conforms to i-effect's *SERVER module, i.e. entries of other tables will be transferred into the corresponding command parameter.

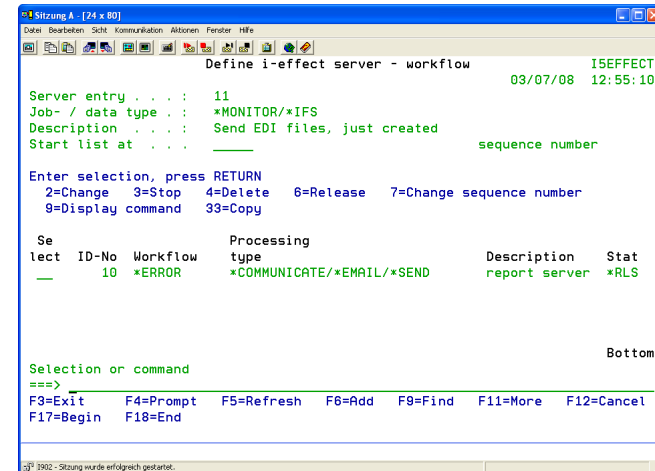
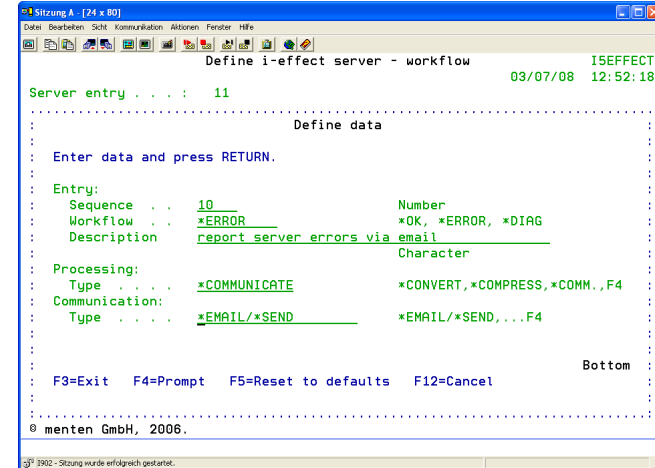
Option 33

This option copies a server entry from an existing number into a new sequence number. All of the existing data will be transferred.

Define Workflow Processing (WRKSRVWFL)

In this program interface, the post-processing entries can be defined, which serve to define the reaction to success or failure of the processes that have already been undertaken.

Press function key F6 to add a new workflow entry:



The following workflow events can be defined:

*ERROR	This server entry will be carried out if the server job was not successful.
*OK	This server entry will be carried out if the server job was successful.

Any process steps can be defined, such as notification via email, fax, SMS, or user defined programs etc. (for further information see the WRKEFFSRV description)

Start and End *SERVER

Menu Item 41: Start i-effect *SERVER

To start i-effect *SERVER select menu item 41 from the main menu "i-effect Conversion, Compression, Communication". i-effect *SERVER can also be started from the WRKEFFSRV display by pressing F22 or with the following command:

STREFFSRV

Menu Item 42: End i-effect *SERVER

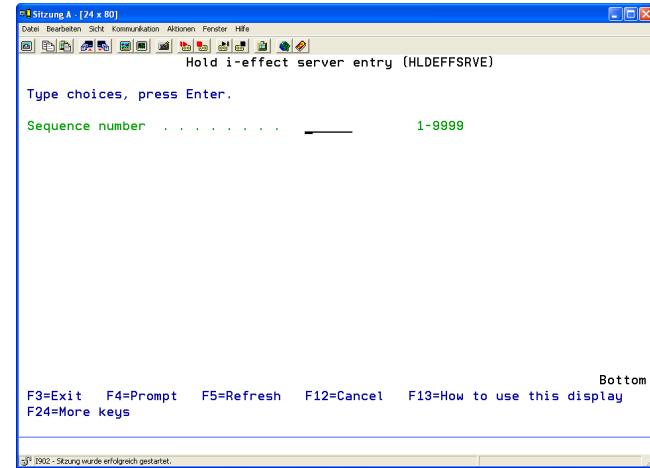
To end i-effect *SERVER select menu item 42 from the main menu "i-effect Conversion, Compression, Communication". i-effect *SERVER can also be ended from the WRKEFFSRV display by pressing F22 or with the following command:

ENDEFFSRV

Hold/Release Individual Server Entries

HLDEFFSRVE (Hold Server Entry)

The designated i-effect server entry can be held with this command.

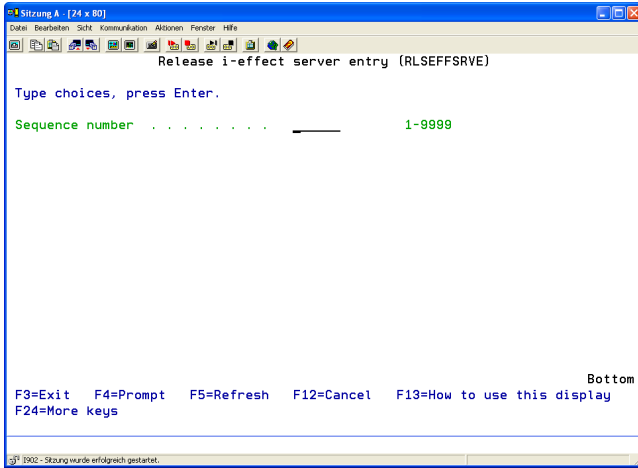


Sequence Number

Number of the server entry.

RLSEFFSRVE (Release Server Entry)

The designated i-effect server entry can be released with this command.



Sequence Number

Number of the server entry.