

## Chapter 16

# Archiving

## Archive PDF Files ARCPDF (PDF)

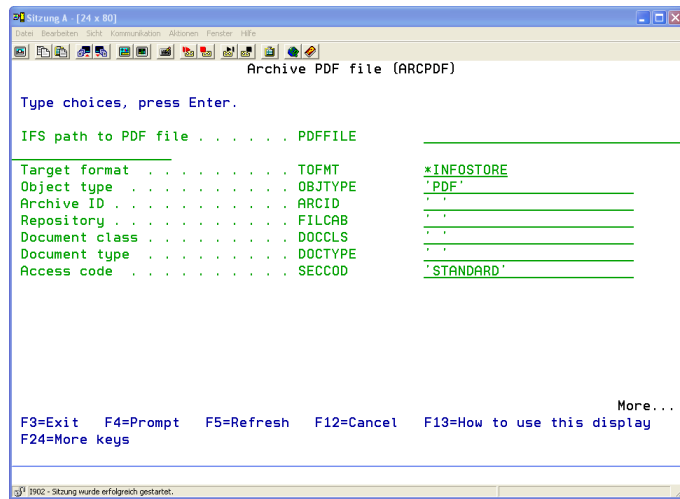
i-effect® contains functions that can archive objects and files. Either an external archive system, such as InfoStore from SOLITAS, or i-effect®'s internal filing system can be used. Various i-effect® commands are used to file objects in these archiving systems and provide a method of passing on index values along with their corresponding values.

### Using the ARCPDF-command

This command is used to archive any PDF file into an archive system. The user can extract any character string from the PDF file for use as an index term for the document.

Depending on the archiving system in use, these indexes will either be transferred to the archiving system's interface with the document to be archived, or stored within i-effect® for later retrieval. Finding the text strings in the PDF file can be accomplished either by naming the X/Y coordinates of positions of text, or by reading key string elements.

Index terms that are not from the PDF file but must be passed on, because they are required for a specific process, can be entered here.



### Parameter „IFS path to PDF file“ (PDFFILE):

The PDFFILE (IFS path to PDF file) parameter specifies the qualified name of the PDF file to be processed. This is a required parameter.

### Parameter Target format (TOFMT):

The TOFMT (Target format) parameter specifies the archiving system to be used.

#### Special values:

**\*INFOSTORE** InfoStore from SOLITAS will be used as the archiving system.

This is a required parameter.

### Parameter Object-Type (OBJTYPE)

The OBJTYPE (Object-Type) parameter specifies the object type, under which the object is stored in the InfoStore system. These object types can be maintained using the command WRKOBTD within InfoStore.

#### Possible values are:

PDF	The object type is PDF. This is the default extension for PDF files.
*AUTO	If the stream file's suffix is not defined, it will be automatically created.
Name	Enter a unique Suffix

This is a required parameter.

### Parameter Archive-ID (ARCID)

The ARCID (Archive ID) parameter specifies the name of the archive to be used for this process.

### Parameter File Cabinet (FILCAB)

The FILCAB (File Cabinet) parameter names the file cabinet into which the object will be archived.

### Parameter Document class (DOCCLS)

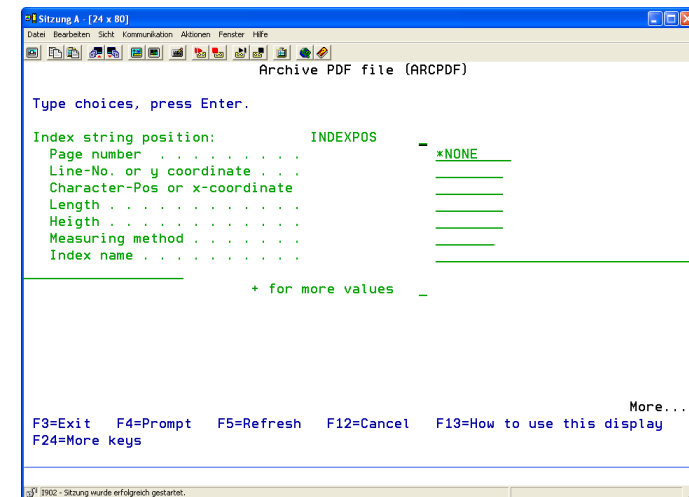
The DOCCLS (Document class) parameter specifies the name of the document class that this object will be allocated to. This object class will be used during the retrieval of objects.

### Parameter Document type (DOCTYPE)

The DOCTYPE (Document type) parameter specifies the document type that this object will be allocated to.

### Parameter Access code (SECCOD)

The SECCOD (Access code) parameter specifies the name of the security code that this object will be allocated to. The security code specifies the access rights for users of the archive.



The INDEXPOS (Index string position) parameter can define positions in the file from which i-effect® will extract items of text and pass them on as index values to the archive system.

**Special values:**

**\*NONE** No index values with index string position will be extracted.

**Other values (up to 100 repetitions)****Element 1: Page number**

The page number from which the text will be extracted. i-effect® will extract the text from the position on the page specified below and will pass it on as a parameter to the archive system, but only for the page specified here. Alternatively, specify \*ALL and i-effect® will pass on the value at the specified location on each page in the output file. If the output file consists of 5 pages, 5 parameters will be passed on, one for each page.

**1** The data will be taken from the first page only.  
**\*ALL** The data will be taken from all pages.  
**1-9999999** Specify the page number from which the data should be taken.

**Element 2: Line-No. or y coordinate**

Depending on the value specified for the „Measurement method“ below, enter either the line number on which the parameter text appears in the file (\*ROWCOL) or the vertical coordinate on the page where the start of the text appears (measured in millimeters for \*MM, centimeters for \*CM or inches for \*INCH).

**1** The default is 1  
**0.001-999.999** Specify the line number or vertical coordinate.

**Element 3: Character-Pos or x-coordinate**

Depending on the value specified for the „Measurement method“ below, enter either the column number on which the parameter text appears in the file (\*ROWCOL) or the horizontal coordinate on the page where the start of the text appears (measured in millimeters for \*MM, centimeters for \*CM or inches for \*INCH).

**1** The default is 1.  
**0.001-999.999** Specify the column number of horizontal coordinate.

**Element 4: Length**

Depending on the value specified for the „Measurement method“ below, enter either the number of characters that the parameter text occupies in the file (\*ROWCOL) or the horizontal space it occupies on the page (measured in millimeters for \*MM, centimeters for \*CM or inches for \*INCH).

**1** The default is 1.  
**0.001-999.999** Specify the length of the area occupied by the text on the page.

**Element 5: Height**

Depending on the value specified for the „Measurement method“ below, enter either the number of characters that the parameter text occupies in the file (\*ROWCOL) or the vertical space it occupies on the page (measured in millimeters for \*MM, centimeters for \*CM or inches for \*INCH).

**1** The default is 1.  
**0.001-999.999** Specify the height of the area occupied by the text on the page.

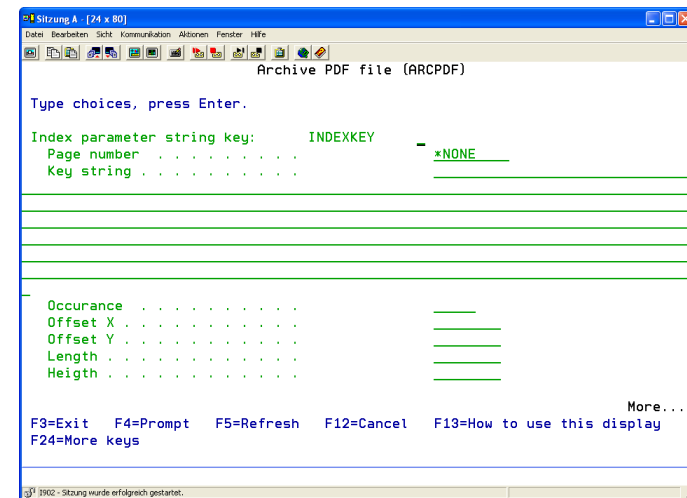
**Element 6: Measuring method**

The unit of measurement for the previous elements.

**\*ROWCOL** Rows and columns.  
**\*INCH** Inches  
**\*CM** Centimeters  
**\*MM** Millimeters

**Element 7: Index name**

The name of the index that is passed on with the extracted data to the archive system. This index name is later the key for retrieving the archived documents.



The INDEXKEY (Index parameter string key) parameter defines key strings that i-effect® will use as triggers for extracting text from the file to pass on as parameters to the archive system.

**Special values**

<b>*NONE</b>	No index values for Index parameter string keys will be extracted from the file.
--------------	--

**Other values (up to 50 repetitions)****Element 1: Page number**

The page number from which the text should be extracted. i-effect® will extract the text from the position on the page specified below and will pass it on as a parameter to the archive system, but only for the page specified here. Alternatively, specify :hp2.\*ALL:ehp2. and i-effect® will pass on the value at the specified location on each page in the output file. If the output file consists of 5 pages, 5 parameters will be passed on, one for each page.

<b>1</b>	The text will be extracted from the first page.
<b>*ALL</b>	The text will be extracted from all pages.
<b>1-9999999</b>	Specify the page number from which the text should be extracted.

**Element 2: Key string**

The key string for selection.

<b>Character-value</b>	Specify the key string which will trigger the selection of parameter text.
------------------------	--

**Element 3: Occurrence**

If the key string appears more than once on each page, the number entered here will determine which occurrence of the key string will trigger the selection of parameter text.

<b>1</b>	The first occurrence
<b>1-999</b>	Specify the occurrence of the key string.

**Element 4: Offset X**

Depending on the value specified for the „Measurement method“ below, enter the X-offset in either characters (\*ROWCOL) or measurement units (\*MM, \*CM, \*INCH) from the start of the key string to the start of the text to be selected as a parameter. A positive number indicates that the parameter text is to the right of the key string; a negative number indicates that the parameter text is to the left of the key string.

<b>0</b>	The default offset is 0 units.
<b>-999.999-999.999</b>	Specify the offset in the measurement units defined below.

**Element 5: Offset Y**

Depending on the value specified for the „Measurement method“ below, enter the Y-offset in either characters (\*ROWCOL) or measurement units (\*MM, \*CM, \*INCH) from the start of the key string to the start of the text to be selected as a parameter. A positive number indicates that the parameter text is below the key string; a negative number indicates that the parameter text is above the key string.

<b>0</b>	The default offset is 0 units.
<b>-999.999-999.999</b>	Specify the offset in the measurement units defined below.

**Element 6: Length**

Depending on the value specified for the „Measurement method „below, enter either the length of the parameter text in characters (\*ROWCOL) or in measurement units on the page (\*MM, \*CM or \*INCH).

<b>1</b>	The default length is 1 unit.
<b>0.001-999.999</b>	Specify the length in the units defined below.

**Element 7: Height**

Depending on the value specified for the „Measurement method „below, enter either the height of the parameter text in characters (\*ROWCOL) or in measurement units on the page (\*MM, \*CM or \*INCH).

<b>1</b>	The default height is 1 unit.
<b>0.001-999.999</b>	Specify the height in the units defined below.

**Element 8: Measuring method**

The unit of measurement for the previous elements.

<b>*ROWCOL</b>	Rows and columns.
<b>*INCH</b>	Inches
<b>*CM</b>	Centimeters
<b>*MM</b>	Millimeters.

**Element 9: Index name**

The name of the index that is passed on with the extracted data to the archive system. This index name is later the key for retrieving the archived documents.

The INDEX (Index value) parameter specifies index names and values that can directly be passed to the archive system.

**Special values:**

**\*NONE** No direct index values will be passed on to the archive system.

**Other values (up to 50 repetitions):****Element 1: Index name**

The name of the index that will be passed on with the index value from the next element to the archive system. Using this index name, the document data can later be retrieved from the archive system.

**Element 2: Index value**

A character string that is passed on as index value for the index name specified in the previous element.