



i-effect[®] Installation Guide



Installation

Note: For successful installation of the software, use the installation program provided with the software, which has automated the entire installation process. All required objects will be loaded from the DVD automatically; the required objects will be stored on the system; and, if a program update is being installed, the existing data of the older version will be retained. The recommended way to install the product is the usage of the graphical installer. The type of installation described in this manual using the system LODRUN function is only recommended when the graphical installer is not available.

Before Installation

- 1) Log in as system administrator (QSECOFR) or ask a system administrator to help with the installation.
- 2) Check to ensure that the correct number of installation DVDs was delivered. The number can be found on the DVD's label.
- 3) Ensure that the correct version of the operating system is loaded. The software requires processes that can only be run by V5R3M0. To display the current version number, follow the indicated steps. If the correct version is loaded, continue with the next step.
- 4) *Enter: DSPPTF*
The system will display the current PTF status for Product-ID 5769999.

The line "Release of base option" should read at least V5R3M0.

Check to see if the system requirements (<http://www.menten.com/de/i-effect/system-voraussetzungen.php>) are met for i-effect. If these requirements are not met, then installation should be terminated at this point. The software cannot be used on the current system. The required operating system version needs to be installed beforehand.

```

Work with PTF Groups                                System: SBCS24

Type options, press Enter.
1=Order  4=Delete  5=Display  6=Print  8=Display special handling PTFs
9=Display related PTF groups

Opt  PTF Group      Level  Status
---  -
  *  SF99616         4      Installed
  *  SF99610        911    Installed
  *  SF99609         45     Installed
  *  SF99608         10     Installed
  *  SF99601         10     Installed
  *  SF99562         10     Installed
  *  SF99357         11     Installed
  *  SF99356         10     Installed
  *  SF99354         4      Installed
  *  SF99197         9      Installed
  *  SF99115         9      Installed

F3=Exit  F6=Print  F11=Display descriptions  F12=Cancel
F22=Display entire field

Bottom
  
```

Download of i-effect

- 1) If you haven't already received a DVD or downloaded the software, enter the following address into an internet browser:
<http://www.i-effect.com>
- 2) Follow the instructions found under the menu DOWNLOADS to request a download link, that is being sent to your eMail address. Use the link in the received eMail to download the software and store the file (a compressed iso image) on your local hard disk
- 3) The file can be decompressed/unpacked by using WINZIP. Start Windows Explorer and double click on the file.
Choose the option to unpack and save the resulting data in a directory on the computer. One file with the ending .iso will be saved.
If DVD installation is desired, burn the file onto a DVD and follow the instructions found under "DVD Installation." Alternatively you can load the downloaded .iso file into an image catalog. Follow the instructions found under "Installation from Image catalog"

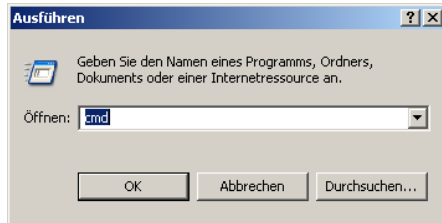
Note: It is recommended to use the graphical installation instead. After inserting the DVD into the drive of a PC, the installer starts automatically. Additional references can be found in the short reference "graphical installer"

Installation from image catalog

To be able to install the software you will transfer the .iso file into an IFS directory on your IBM i system using a FTP connection.

The following is an example of a Windows XP FTP session. It shows the general procedures, which will vary depending on operating system and FTP program. Transfer in any case the received .iso file into any directory on your IBM I system.

Call up an MS-DOS command prompt.



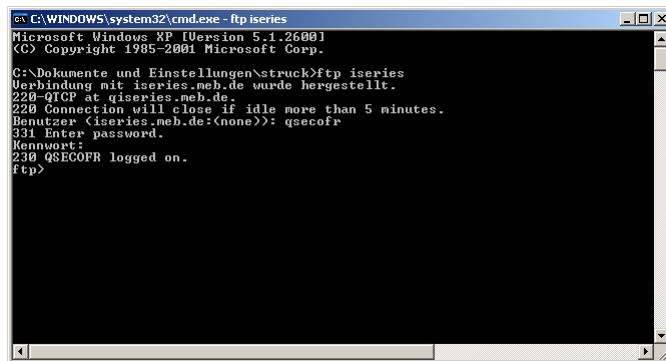
Start the FTP client by entering:

```
FTP <host> [enter]
```

Replace <host> with the IP address of the IBM i System.

Enter a valid IBM i username.

Enter the appropriate password.



Switch to binary mode by entering:

```
BIN [enter]
```

```
quote site namefmt 1 [enter]
```

Start the transfer; here as an example on a local .iso file in directory /tmp, by entering:

```
PUT c:\tmp\V2R1M0.094.iso /tmp/V2R1M0.094.iso [enter]
```

After the transfer is complete, exit the FTP client by entering:

```
QUIT [enter]
```

Exit the MS-DOS command prompt by entering:

```
EXIT [enter]
```

As far as your system does not already have a virtual optical device, create one by entering :

```
CRTDEVOPT DEVD(OPTVRT01) RSRCCNAME(*VRT) [enter]
```

Create an image catalog:

```
CRTIMGCLG IMGCLG(IEFFECTDVD)
```

```
DIR(/tmp/i-effectDVD')
```

```
CRTDIR(*YES)
```

Add the transferred .iso file to the catalog:

```
ADDIMGCLGE IMGCLG(IEFFECTDVD)
```

```
FROMFILE(/tmp/V2R1M0.094.iso')
```

```
TOFILE(*FROMFILE)
```

Load the image catalog. Enter the name of the virtual optical device that already exists, or the name of the device that you have created in the parameter DEV

```
LODIMGCLG IMGCLG(IEFFECTDVD)
```

```
OPTION(*LOAD)
```

```
DEV(OPTVRT01)
```

Start the installation:

```
LODRUN DEV(OPTVRT01)
```

```
DIR(/Install/software')
```

Continue with chapter „i-effect Installation routine“

DVD Installation

i-effect's software can be installed directly from the DVD onto the system.

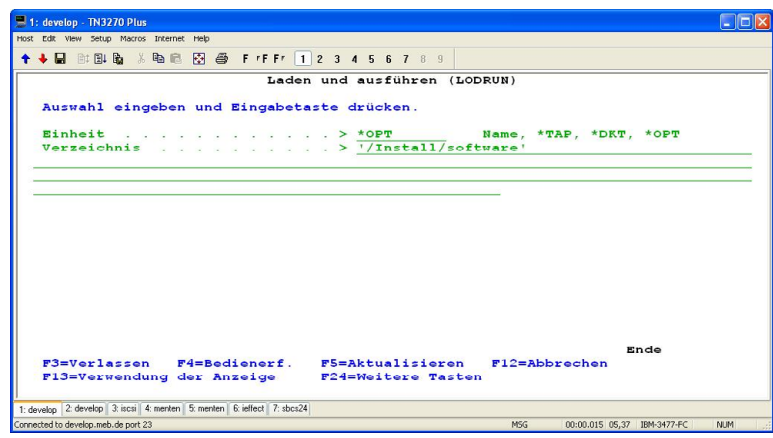
- 1) Place the DVD into the appropriate device of the BM i system and switch on the device.
- 2) Start the installation program.

The installation program on the DVD will assist in loading the required objects onto the system. The i-effect application cannot be used without this program.

In this program, the most important parameters for installation start are determined.

The application LODRUN, which is contained in the operating system, runs and loads the installation program.

- 3) Enter the command: `LODRUN` [Command 4]
The following display will appear:



Device (DEV)

Name of the device, in which the i-effect CD/DVD was placed. The installation program and the rest of the applications will be run from this CD/DVD.

Directory (DEV)

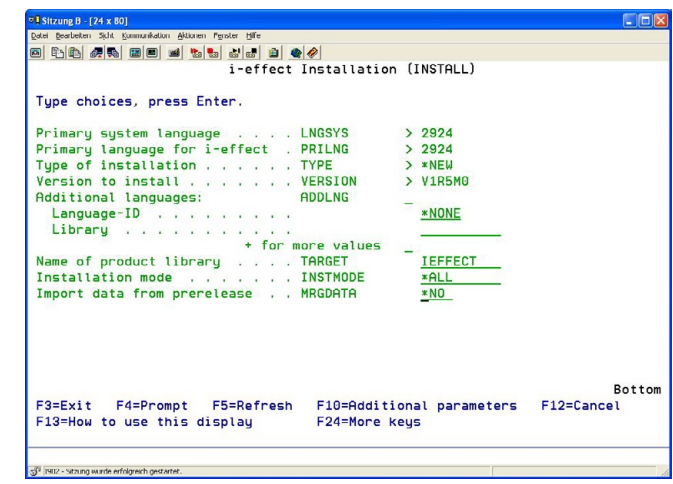
The software is contained in a sub directory of the DVD. Enter '/Install/software' als value for this parameter.

- 4) After the information has been entered, press enter to start the installation. During data transfer, a status display will appear.

After the installation program is loaded from the DVD, the following display will appear. Several options for installation can be set here.

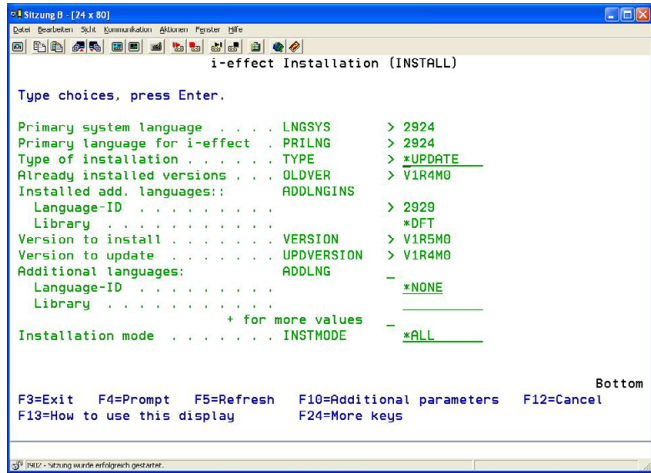
i-effect Installation Routine

The following display will appear, if the installation routine finds one or more existing versions of the product (2MEBEFF) that are already present on the system.



If there is an existing version on the system, it can be replaced or a new installation can be made, in which the product will be installed in a new library.

The following display will appear if there are no existing versions (2MEBEFF).



The parameters have the following meanings:

Primary System Language (LNGSYS)

The primary language of the system will be displayed.

| | | | |
|------|----------------------|------|-----------------|
| 2929 | German | 2932 | Italian |
| 2924 | English | 2942 | Italian MNCS |
| 2939 | German MNCS | 2904 | Latvian |
| 2928 | French | 2903 | Lithuanian |
| 2995 | Albanian | 2913 | Macedonian |
| 2963 | Belgian Dutch MNCS | 2933 | Norwegian |
| 2909 | Belgian English | 2978 | Polish |
| 2966 | Belgian French MNCS | 2922 | Portuguese |
| 2980 | Brasilian Portuguese | 2996 | Portuguese MNCS |
| 2981 | Canadian French MNCS | 2992 | Romanian |
| 2912 | Croatian | 2979 | Russian |
| 2975 | Czech | 2914 | Serbian |
| 2926 | Danish | 2994 | Slovak |
| 2923 | Dutch Netherlands | 2911 | Slovenian |
| 2950 | English Uppercase | 2931 | Spanish |

| | | | |
|------|-------------|------|--------------------------------|
| 2902 | Estonian | 2937 | Swedish |
| 2998 | Farsi | 2956 | Turkish |
| 2925 | Finnish | 2984 | Englisch DBCS |
| 2940 | French MNCS | 2962 | Japanese (Katakana) DBCS |
| 2959 | Greek | 2989 | Simplified Chinese DBCS (PRC) |
| 2976 | Hungarian | 2987 | Traditional Chinese DBCS (ROC) |
| 2958 | Icelandic | 2986 | KoreanDBCS (Feature2986) |

Primary i-effect Language (PRILNG)

Displays the primary language of i-effect. If the iSeries system has a primary language that is one of the primary languages of i-effect, then this language will automatically be chosen. If the primary system language is not among the acceptable languages, then the standard language 2924 (English) will automatically be chosen.

Type of Installation

This parameter indicates whether this is a new installation (this version of the product is not on the system and a new installation will be made) or if there are previous version(s) on the system.

If a previous version of i-effect is already on the system, then either the older version can be replaced or a new installation can be made. i-effect will then be saved in a different library if a new installation is made.

The system will automatically update the installation, if the version to be installed is already present on the system.

Previously Installed Versions (OLDVER)

Older versions that were found on the system will be displayed here.

Install Additional Languages (ADDLNGINS)

The languages that have been installed on the system will be displayed here.

Possible Special Values:

*NONE No additional languages are installed.

Language ID

ID of the current language. (29xx)

Library

Library name where the language has been installed.

Possible Special Values:

**DFT* The default library name will be used, e.g. IEFF2929 if the language key 2929 has been selected.

Version to install (VERSION)

Displays the version of the product, which is to be installed in the format: VxRyMz (version, release, modification).

Update Version (UPDVERSION)

Specifies the existing version on the system for installations where *UPDATE is selected.

Possible Special Value:

**FIRST* This first (oldest) version will be updated.

Note (Secondary language installed): To use the secondary language the language library has to be added to the system library list. To use the secondary language, the language library has to be added to the system library list. For that purpose use the command CHGSYSLIB LIB(&2). After starting the application with the help of the command IEFFECT, the dialog displays will then appear in the chosen language. To remove the selected secondary language from the system library list use the command CHGSYSLIB LIB(&2) OPTION(*REMOVE).

This advice will be also posted the installations Joblog.

Additional Languages (ADDLNG)

If desired, any number of additional languages, which are supported by the software, can be installed at installation.

Possible Special Values:

**NONE* No additional languages will be installed.

Language ID

ID of the additional language. (29xx)

Library

Library name where the language is to be installed. The library must not already exist.

Possible Special Values:

**DFT* The default library name will be used e.g. IEFF2929 if the language key 2929(German) has been chosen.

Name of the Product Library (TARGET)

The new program version will be installed into this library. If desired, the application can be stored in a separate library as IEFFECT by entering the new name. This library must not already exist on the system. Valid only for TYPE (*NEW).

Possible Special Value:

IEFFECT Default value

Data Migration from (MIGLIB)

Data will be take from this library by i-effect. Only valid for TYPE(*NEW).

Possible Special Value:

**NONE* No data migration will occur.

Please Note: If *NONE is selected, the installation routine will test if 2MEBGZP (gzip400), 2MEBASC (ascon), and 2MEBEDC (edicon) are installed on the system, and migrates the data, in this case, automatically.

Installation Mode (INSTMODE)

i-effect can either be installed in its entirety or only the required modules can be installed.

Possible Special Values:

**ALL* i-effect will be installed in its entirety.

**SELECT* If *SELECT is chosen, a list of the modules will be displayed.

Modules (MODULES)

By using *YES and *NO, the modules to be installed can be chosen. If this type of installation is chosen, i-effect takes module dependence into account. For example, the *FAX module cannot be installed without the *EMAIL and *BASE modules.

If the installation is an update, the values of the INSTMODE parameter of the older version will be automatically corrected. Modules that are already present, will not be uninstalled in this case.

Possible Special Values:

*YES The module will be installed.
*NO The module will not be installed.

Data Migration from a Previous Release (MRGDATA)

By using *YES and *NO it can be determined if the master data and settings from the last release of i-effect will be carried over. Data and settings can only be used from the last and most current release and not older releases.

Possible Special Values:

*YES The data will be carried over.
*NO The data will not be carried over.
 All required settings must be determined anew.

Update IEFFECT User (RESETAUT)

By using *YES and *NO it can be determined if the attributes of the IEFFECT user profile should be updated in the *UPDATE installation.

Possible Special Values:

*YES The IEFFECT user profile will be updated. The default settings will be restored.
*NO The user profile will not be updated.

Installation Errors

After a successful installation, the following message will appear:

The installation/configuration was finished successfully.

If this message does not appear, the joblog can be used to determine the cause:

- Was the installation carried out under QSECOFR?
- Was there version of i-effect already installed on the system, and was the program used?

Select one of the following points for restoration:

- Start the installation again, once the cause has been determined.
- Contact software support.

After Installation

Call up the i-effect main menu:

```
ieffect/ieffect
<lib>/ieffect
```

i-effect Uninstall

i-effect (2MEBEFF) is an IBM license program. To uninstall the program, use the LICPGM system menu.

1. GO LICPGM
2. Option 12 "Delete License Program"

The menu calls up a list of the license programs that are installed.

Enter option 4 in front of the desired program and press enter.

i-effect can also be uninstalled with the following commands:

```
DLTLICPGM
LICPGM(2MEBEFF)
RLS(*ALL)
```



Licence conditions:

Change to another System i partition (with a serial number other than the number of the original license) is permitted only through written notification to and authorization by menten.
The use of the software incl. documents is exclusively for internal company intended purpose.

menten
IBM i software solutions

menten GmbH

Hauptstraße 136-140
51465 Bergisch Gladbach, Germany

Telefon +49 2202 - 2399 - 0
Telefax +49 2202 - 2399 - 23

info@menten.com
www.menten.com

© 2009, menten GmbH. All rights reserved. i-effect is an registered trade mark of menten GmbH.
All other company, brand or product names can be the copyright of other companies.