



i-effect[®] PDF-Printer

Installation, Configuration and Use



i-effect PDFPrinter

i-effect PDFPrinter is an expansion of the Spool+(SpoolPlus) module. It monitors directories for PDF files.

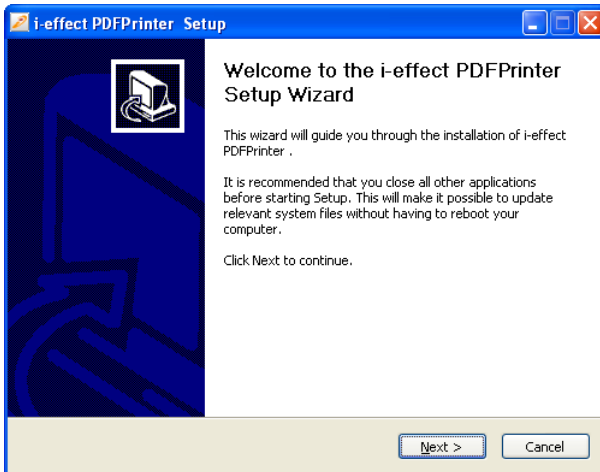
A PDF-Direct compatible printer(one that can process PDFs itself) is required to us this program, for example: laser printers from Hewlett Packard, IBM, Lexmark, or similar ones. Consult the manual or ask our support for further information.

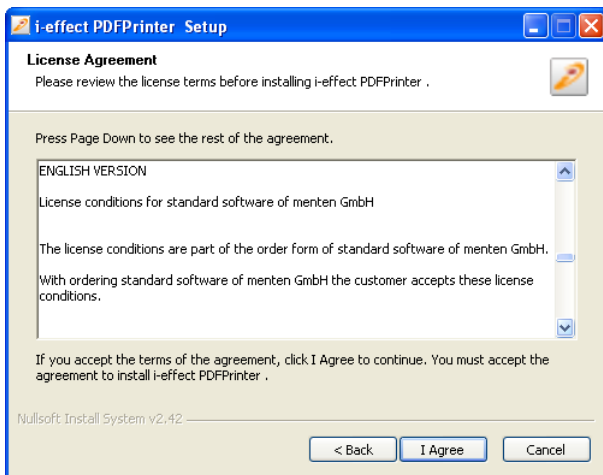
Program Operation:

If a PDF file is saved into the specified directory(specified during configuration), it will be forwarded to the printer spooler to be printed.

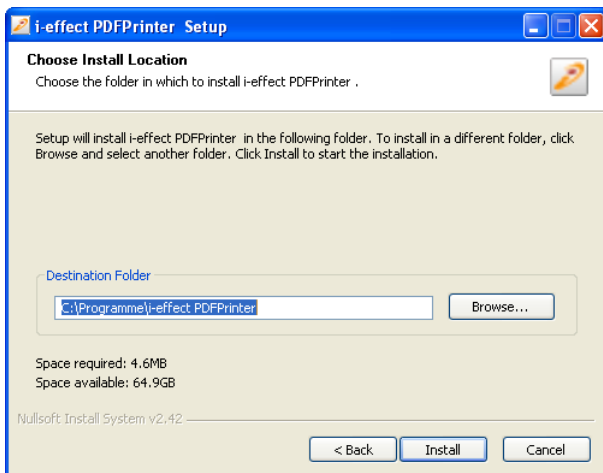
Installation:

After the installation program (SetupPDFPrinter.exe) has started the following displays will appear:

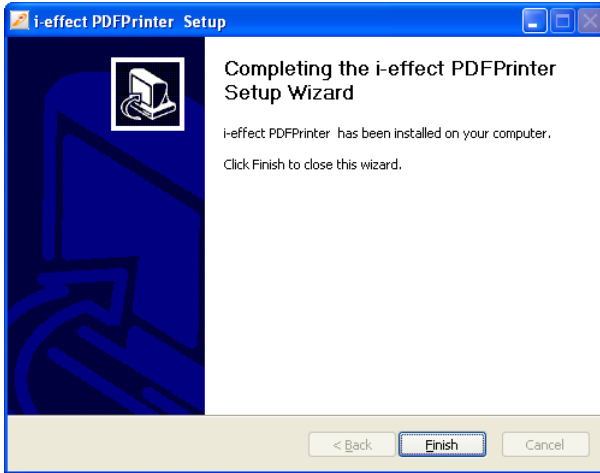




After the terms have been accepted the following will appear:



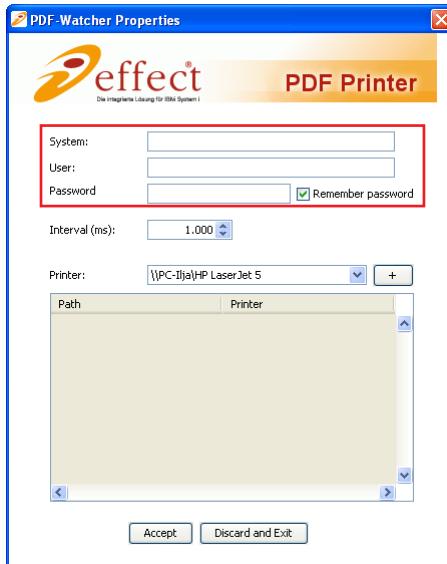
The installation directory can be specified here.



This display ends the installation of the i-effectPDFPrinters.

Configuration:

Configuration of the program is required, when the program is run for the first time:



System

Enter the IP-address or the DNS name of the System i, where the SpoolPlus license is contained.

User

Enter a valid username for the System i.

Password

Enter the correct password for the specified user.

If the program should not remember the password for this used, uncheck the box "Remember password."



Interval

Interval specifies the time in milliseconds, in which the software will wait between directory scans. The value can be between 500 and 15,000 milliseconds.

Printer

Select a printer. After this a directory, from which the PDF files will be taken for printer, can be selected by pressing the button "+." This can be repeated for multiple printers.

The allocation of directories and printers can be viewed in the table. If a change in allocation is desired, use the right mouse button to click on the context menu to delete an entry.

If all settings have been made, pressing apply starts monitoring. If the settings should not be saved, and the program ended, choose "discard."

If the program accepts the settings, it will be minimized and put in the system-tray. By double clicking on it in the system tray it can be brought up again.



If desired, this can also be accomplished with a right click. A menu will appear, where exit or configuration of the program can be chosen.

After the program has been configured, it will automatically minimize itself into the system-tray.

